

REGIONS LEADING THEIR OWN DEVELOPMENT

EXECUTIVE PROGRAM

20 – 23 OCTOBER 2024 | NATIONAL MUSEUM OF AUSTRALIA, CANBERRA

SHAPE 'FIT FOR THE FUTURE' REGIONS



REGIONAL
AUSTRALIA
INSTITUTE

WHY WE MUST BUILD OUR CAPACITY TO THRIVE



LIZ RITCHIE
CEO
REGIONAL AUSTRALIA INSTITUTE

Right now, at every level, people in Australia's regions are being challenged to build the skills, knowledge and capacity to leverage an era of huge opportunity that requires rapid and agile transition towards the futures, powered by new economies and different, more collaborative ways of working.

To work ahead of the game in this time of exponential change and opportunity, regional decision-makers across all sectors and all tiers of government must build new capabilities and knowledge to help make the shifts needed to realise their regions' ambitions for the future.

Creating region-level progress on complex issues demands a collective approach to 'shifting the needle' by leveraging behaviour change at individual, organisational and regional systems-levels. The practice of region-led development and innovation offers a systemic and evidence-based approach to identifying and activating opportunity within these complex challenges.

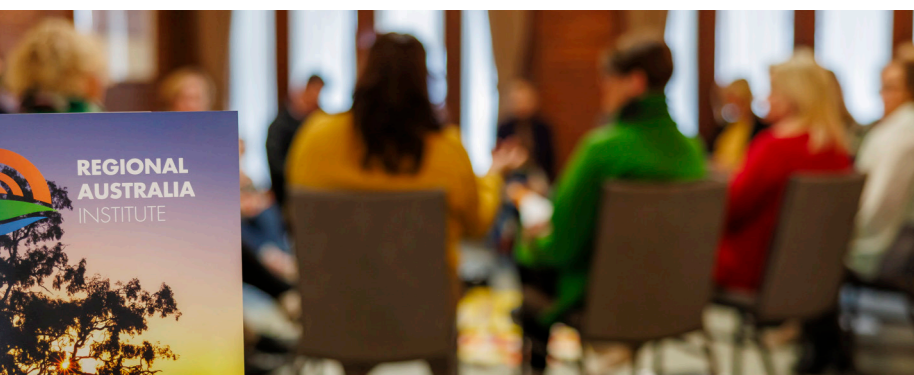
Making time to grow, stretch and elevate your practice of region-led development and transition has never been more important.

This three-day Program draws on over twelve years of leading research and insights developed by the RAI and some of the nation's top minds and leading authorities on best practice approaches to the development of regional systems, their communities and economies.

This small-group, high-impact Program is tailored to provide you and fellow regional senior executives with one-on-one access to leading experts and master practitioners to advance your practice of region-led development to enable you to:

- Increase your capacity to work with a region in transition
- Expand collaborative impact across each region and beyond
- Boost individual, organisational and regional performance and deliver improved results within existing areas of accountability
- Grow a high-trust network of peers in positions of authority across Australia.

This Executive Education Series is partially funded by the Australian Government through the Department of Infrastructure, Transport, Regional Development, Communications and the Arts.



**THE PROGRAM OFFERS
REGIONAL CEOS AND SENIOR
EXECUTIVES A SYSTEMATIC
PROCESS TAILORED TO THEIR
OWN SITUATION TO AMPLIFY
THEIR PRACTICE.**



AMPLIFY YOUR FUTURE READY CAPABILITY

Gain a strategic advantage at the leading edge of practice development.

Regional CEOs and senior executives are under enormous pressure to balance insight, resilience, adaptability, instinct and performance with growing their capacity to develop and transition their organisations, sectors and communities to adapt to and thrive in an uncertain future.

The Regions Leading Their Own Development Executive Program is for senior leaders wanting to build their capability to shape their regions, economies, industry sectors and communities in an age of complexity and disruption.

The Program will amplify and stretch your individual practice in regional innovation, development and transition, supported by a diverse faculty of leading thinkers and practice leaders from across Australia and a small and select cohort of peers.

WHO IS THE PROGRAM FOR



SENIOR LEADERS FOCUSED ON GENERATING POSITIVE REGIONAL IMPACT

CEOs and senior executive leaders who are:

- Seeking to expand their influence and impact in a region
- Curious about more effective ways to deliver existing and future priorities
- Transitioning from a middle or specialist management role
- New to operating in and across regional systems



SECTORS THAT BENEFIT

- Local government
- State or federal government agency and department
- Regional development and advocacy
- Business and industry
- Employment
- Agriculture and horticulture
- Education, skilling and vocational training
- Health services
- Professional services
- Environment, land management, waterways and sustainability
- Service providers and community
- Social enterprises
- Impact focused philanthropy

PROGRAM DETAILS

Dates: 3.30pm, Sunday 20 October 2024 – 1.30pm Wednesday 23 October 2024

Venue: Peninsula Room, National Museum of Australia, Acton, ACT

Co-investment: \$2,300 ex GST

Subsidised Places: \$1,320 ex GST

Applications are invited for **12 x part- subsidised places** from Regional Development Committee (RDA) CEOs and regional not-for-profit CEOs.

What's covered: 3-day program plus pre-work and learning materials

- **20 October - 3.30pm - 8.00pm:** Program Welcome with dinner, peer activities and curated wines, beers and zero alcohol options
- **21-23 October:** Lunch, morning and afternoon tea
- **21 October:** free evening
- **22 October:** 6.00pm - 8.45pm: Thriving Regions Keynote Dinner with curated wines, beers and zero alcohol options

Apply now: Apply now via the link below or by scanning the QR code.



<https://www.regionalaustralia.org.au/Education/Executive-Education>

PARTICIPANT TESTIMONIALS



This was a brilliant program to be part of!
I truly believe there are winds of change in regional Australia – something really special is a brewing!”

JACQUELINE STEEL
CEO - RDA MORETON BAY & SUNSHINE COAST



Amazing to connect and collaborate with leaders who are investing in growing their practice in regional innovation, development and transition”

ASSOCIATE PROFESSOR MELANIE BISH
PRO VICE-CHANCELLOR (REGIONAL) - LA TROBE UNIVERSITY



This Program has been so needed for regional Australia...
The timing, the organisation, and people feel just right.”

JAMES MCKEE
CEO - RDA TASMANIA



So grateful to have been part of this amazing cohort, learning great skills from our facilitators and collaborators, while carving out a better future for regional Australia”

BEN SMITH
CEO - TULGEEN DISABILITY SERVICES



Thanks for a truly inspiring and collaborative experience!
I would highly recommend this program.”

MELISSA BOXALL
GENERAL MANAGER - TEMORA SHIRE COUNCIL



This an incredible opportunity to share ideas, insights and unravel challenges with so many [fellow] regional leaders!”

DR CATHERINE LEES
CHAIR - COMMITTEE FOR ECHUCA MOAMA



LEARNING OUTCOMES

01

CONNECT AND SHARE

Unlock and build on the collective intelligence within the Program to open up opportunities for shared learning, innovation and collaboration across Australia's regions.

THE BIG INSIGHTS

Connect the global picture with your region by drawing on recognised thought leaders and leading practitioners, and engaging in peer learning with other regional practitioners participating in the program.

02

03

WORK AT THE INTERSECTION

Learn how to work with greater influence at the intersection of community influence and public decision-making at all levels of government to create and drive positive impact.

WORK WITH REGIONAL SYSTEMS IN TRANSITION

Better understand the levers, actors and elements of the systems that impact you, your organisation and your region and how you can influence and harness these to generate and influence rapid change in your region.

04

05

AMPLIFY YOUR REGION-LED INNOVATION PRACTICE

Identify where you want to level up your senior practice to shape development and transition of your region or sector effectively.

DESIGN YOUR CASE FOR CHANGE

Build on developing your case for change by amplifying your narrative, vision and solutions to empower regional systems change.

06

AMPLIFY YOUR PRACTICE

IDENTIFY YOUR PLACE



Identify your place in regional systems and map your impact and influence.

EXPLORE REGIONAL ISSUES



Explore regional issues to identify opportunities to challenge for change through your behaviour and practice.

EXPLORE REGIONAL SYSTEMS



Identify where you want to level up your practice to shape development and transition effectively.

DESIGN YOUR CASE FOR CHANGE



Design your case for change to amplify impact in your region.

STATE YOUR CASE



State your case for change in a peer review to test how to level up your influence on an important project.

ADOPT AND TEST



Adopt and test new areas of practice to model increasingly effective ways of working in and across regional systems.

LEVEL UP



Level up your influential senior practice to shape and realise positive regional growth, innovation and transformation.



STRETCH YOUR CAPACITY

To guide your progress towards mastering the practice of region-led development and transition, you will be supported through a series of milestones.

The research, insights, practice tools, and activities will inform the approach you take in your region. The first six milestones will be deeply explored in the Program to set you up to adopt and test new practices within your current levels of accountability using the guiderails we set for you.

INSPIRE OTHERS

Inspiration and celebrating success from peers in the nation-wide RAI Practice Community will fuel your momentum. It is within this group that you will share progress of your milestones as you level up and influence others in your region to adopt more effective ways of working to deliver region-led development and transition.



PROGRAM COLLABORATORS



SUE ANDERSON - PROGRAM FACILITATOR
DIRECTOR & PRINCIPAL CONSULTANT
CO SQUARED

As an industry leading management consultant, educator and facilitator, Sue draws on decades of senior leadership experience and diverse skills to impact many industries across social, government and service sectors. The diverse roles in Sue's career has led her to deeply engage and designing strategy and building workforce capacity and delivering a contemporary approach to education and service design in commercial and for purpose settings. Engaging with a broad client base across regional, rural, metropolitan, and international settings has strengthened Sue's capacity to relate to unique economic, cultural, and societal challenges that face organisations and leaders. As a skilled strategist and clear communicator, Sue respects her role to inspire new thinking while working creatively within constraints that are faced by teams and regions. She is passionate about identifying and defining opportunity for others to focus on clear purpose, constantly learn and build their capacity for greater impact.



MARNIE BAKER | CHIEF OBSERVATION OFFICER
FORMER MANAGING DIRECTOR
BENDIGO AND ADELAIDE BANK

Marnie Baker is a proud regional Australian. Born and raised on a dairy farm in Cohuna in Northern Victoria, she left after high school to study at Bendigo's La Trobe University.

Bendigo which sits on the land of the Dja Dja Wurrung people of the Kulin Nation, is where Marnie calls home and has spent the past three decades working, raising a family and being a pillar of the local community.

Marnie has over 35 years' experience in the financial services industry, across banking, trustee and custodial services, financial planning, insurance and funds management.

She started her career with Bendigo and Adelaide Bank in 1989 and has been an Executive of the Bank since 2000. Marnie was appointed Chief Executive Officer and Managing Director in July 2018.

During her time at the Bank her positions included Chief Customer Officer, Executive Corporate Resources, Chief Information Officer, Group Treasurer and Chief Executive Officer of Sandhurst Trustees.

Marnie concluded her time at the Bank in August 2024 and is eager to spend the next chapter of her career continuing to advocate for regional people and places.

One of the key ways she is doing this is by serving as a director on the Regional Australia Institute's Board which she joined in March 2024.

Marnie believes everyone should be able to live where they love (like she does) and is dedicated to finding innovative ways for the regions to realise an exciting pipeline of investment and growth opportunities.



CR ROB CHANDLER
MAYOR
BARCALDINE REGIONAL COUNCIL

Rob has lived and worked in the Barcaldine district all of his life. After leaving school, he went shearing for 13 years before returning to run the family cattle and sheep operation. Other investments in the region included a motel and cafe in Barcaldine.

In 2000, Rob was elected to the Barcaldine Shire Council and in 2004 he was elected as Mayor. From 2008 to 2020, he was Mayor of the Barcaldine Regional Council and re-elected in March 2024.

During his time as Mayor, he served on the Local Government Association of Qld policy executive (eight years), chaired the Remote Area Planning and Development Board, for 8 years and 18 years on the Outback Tourism Board.

Other board positions include the Rural Financial Counselling Service, RESQ, Red Ridge.

Rob has served on Commonwealth Drought Forum Committee, Local Authority Waste Management Action Committee, Outback Rowing, Outback Trailblazer and Great Australian Charity Cattle Drive.

His drive is to enhance and advance our communities; support agriculture, encourage tourism and business opportunities, care for our elderly, encourage our youth and to work hard with his colleagues and staff, as a team, to achieve.



MORGAN GRONOLD
DEPUTY CEO
RAPAD

Morgan Gronold has worked with RAPAD for close to a decade and is responsible for delivering projects in the central west for the central west, to stabilise regional depopulation, grow jobs, and drive economic diversity, investment, and growth across the region. Projects like The Fence that saved the Outback, and The RAPAD Power Grid, a unique community-led energy infrastructure development project through a collaboration agreement between RAPAD, Barcaldine Regional Council, and Queensland-owned VisIR. Prior to RAPAD, Morgan spent over 15 years in the region with the Queensland Government focused on the international marketing and export of meat and agricultural products which saw him spend time across Latin America, the USA and China.



DR STEFAN HAJKOWICZ
SENIOR PRINCIPAL RESEARCH SCIENTIST
CSIRO DATA 61

Stefan is a chief research consultant in CSIRO working at the interface between science & technology and policy & strategy. His work helps decision makers in government, industry and community organisations explore plausible futures and make wise choices. He wrote Australia’s artificial intelligence (AI) strategy and ethics framework which was launched by the Australian government and guides AI application and development nationally.

In recent work he has examined adoption patterns and productivity impacts of AI for scientific research and is currently working on the sovereign capability and policy dimensions of generative and foundational AI models. He led a recent project with the Tech Council of Australia mapping geographic patterns of technology industry clusters and specialisations across Australia. His research expertise is in the fields of decision theory, geography, economics and strategic foresight. He is widely published in the peer-reviewed international research literature and his book “global megatrends” is a CSIRO Publishing best seller.

He was awarded as one of Australia’s 10 best public speakers by the Committee for the Economic Development of Australia and is under heavy demand from industry as a speaker, consultant and advisor. He has a doctorate in geography from the University of Queensland and Graduate Diploma in Economics from the University of New England. He has membership of the World Economic Forum’s Global Strategic Foresight Community and the OECD’s Government Foresight Community.



LIBBY HEARD
EDUCATION PROGRAM MANAGER
REGIONAL AUSTRALIA INSTITUTE

Libby is one of the newer members of the team and as Education Program Manager, plays a key role in transforming our research expertise and insights into engaging practitioner-focused professional learning programs and materials.

With 20 years’ experience in Agriculture extension and development, she is an outcome focused arranger, who loves to tackle a project with strategy and people focused leadership. As an active member of her local regional community, Libby is passionate about encouraging others to embrace opportunities and diversity that living out of metro areas brings.



DR CAROLINE HUGHES AM
EXECUTIVE DIRECTOR - COLLECTION SERVICES
AUSTRALIAN INSTITUTE OF ABORIGINAL AND TORRES STRAIT ISLANDER STUDIES (AIATSIS)

Dr Caroline Hughes AM is a proud Ngunnawal woman and the Executive Director, Collections Services Group. She has made significant contributions to the field of education throughout her career, which spans over 30 years. She came to AIATSIS from the Canberra Institute of Technology (CIT) where she was the Director of the CIT Yurauna Centre of Educational Excellence for Aboriginal and Torres Strait Islander Peoples.

Aunty Caroline empowers others to achieve their dreams through the power of education and employment. As practitioner, manager and leader of VET programs in community development and client support services she ensured that cultural heritage has been the essence of all. Caroline has led the design and delivery of cultural programs that have strengthened the cultural capability of individuals and teams across organisations - within government and private sectors. Aunty Caroline grew partnerships and improved engagement with governments, private sector and community to improve business outcomes as well as increased the commercial income to support profitable operations and outcomes. Her leadership has contributed to policies, strategies, compliance and business acumen.

Aunty Caroline has been awarded an Honorary Doctorate of University of Canberra, a Bachelor Adult Education as well as Graduate Certificate in Leadership & Management and Graduate Certificate Leadership in the VET Sector.



JAMES MCKEE
DIRECTOR OF REGIONAL DEVELOPMENT / CHIEF EXECUTIVE OFFICER
RDA TASMANIA

James is the Director of Regional Development and CEO at RDA Tasmania. He has held a wide variety of executive and board positions across a range of sectors, most recently as the Director of Northern Transformation for UTAS and the Director of Northern Cities for the State Government along with board roles including the Chair of Tourism Northern Tasmania, Cycling Tasmania and the Launceston Airport CACG.

James is also a regional development practitioner with a particular interest in futures and strategy. It is this capacity James has facilitated numerous workshops for regional organisations seeking to help them build strategy as a living process that can adapt and respond to change. James employs scenario planning as a tool in this process to support organisations think about the big national and global trends and ground them in an adaptive strategy. His primary background is in agricultural science and management, he is a graduate of the Australian Rural Leadership Program (MDB), Social Impact Leadership Australia, AICD, Mt Eliza and the RAI Regions Leading Their Own program. He has also spent time developing and supporting community development programmes in the USA and India.



SIMON PRYOR
RESEARCH AND POLICY DIRECTOR
REGIONAL AUSTRALIA INSTITUTE

Simon has worked in economic policy and strategy for business and government over a career spanning three decades. Simon was Executive Director, Policy and Senior Economist at the Business Council of Australia, with responsibility for research, policy development and advocacy on issues including population, infrastructure, housing, regulation and corporate governance. Simon has held commercial and policy roles in the Victorian Government, for major businesses in the airline and telecommunications sectors, and as an economic policy consultant.



LIZ RITCHIE
CHIEF EXECUTIVE OFFICER
REGIONAL AUSTRALIA INSTITUTE

Liz's primary purpose at the RAI is to make a difference through providing leadership, engagement, information and connectivity. Heralding from country NSW, she understands the issues impacting regional Australia and has designed and executed programs across Australia to engage in economic and social issues affecting our regions.



AMY ROBINSON
EXECUTIVE OFFICER
GREATER SHEPPARTON LIGHTHOUSE PROJECT

Amy is a social change leader at Greater Shepparton Lighthouse Project, a place-based collective impact movement improving health and educational outcomes for children and young people in the region.

After completing a Bachelor of Management with Federation University Amy transitioned from founding hospitality ventures to work as a trainer and assessor and regional coordinator of the registered training organisation for Berry Street. During this time Amy supported at risk youth predominantly residing in out of home care, in both the Seymour and Shepparton communities. Amy joined Lighthouse in 2018, initially coordinating the secondary and transitions initiatives.

Amy is a dedicated advocate who is driven to address social justice inequities. Amy is also a current member of the Shepparton Education First Youth Foyer Advisory, Lift Off educational scholarships committee as well as the Department of Education's Shepparton Education Plan Advisory Board.



CHRIS SOUNNESS
CHIEF EXECUTIVE OFFICER
WIMMERA SOUTHERN MALLEE DEVELOPMENT

Chris Sounness is the CEO of Wimmera Southern Mallee Development, an organisation dedicated to fostering sustainable growth in the Wimmera Southern Mallee region. Chris is deeply committed to ensuring that changes within the region bring tangible benefits to the communities affected. He believes that while change is inevitable, it is crucial to guide it towards better outcomes.

With an understanding based on curiosity of the key issues and opportunities facing farmers and regional communities, Chris passionately advocates for sustainable development. Outside of his professional life, Chris enjoys cycling along the Wimmera River, occasionally plays cricket (albeit not very well), and proudly declares he is a West Australian despite residing in Victoria.

Chris holds a Bachelor of Applied Science with Honors in Biology and has earned two Master's degrees: one in Arts, specialising in Organisational Communication, and the other in Marketing, focusing on Agribusiness.



ANNA STEPHENSON
DIRECTOR - REGIONAL IMPACT AND EDUCATION
REGIONAL AUSTRALIA INSTITUTE

Anna is developing RAI's Education portfolio to meet the learning needs of regional industries, communities and government to help achieve the best outcomes for regional Australia. She brings over 25 years' experience advocating, innovating and helping to grow regional economies, industries, workforces, future skills and communities across NSW, Queensland, Victoria and Tasmania. She has worked together with a diverse range of businesses, industry sectors, Australia's three tiers of government, not-for-profits and communities. An original thinker, strategist and learning designer, Anna's 15 years in farming grounds her practical yet innovative approaches to capacity building and regional systems change.

Anna is currently participating in the year-long Williamson Leadership Program.



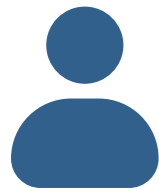
KATIE STUBLEY
SOCIAL DESIGN AND SYSTEMS INNOVATION
GRIFFITH CENTRE FOR SYSTEMS INNOVATION

Katie Stublely is passionate about system change and combining systems thinking with design-led approaches to create impact. She currently works between several organisations to drive change including the Presencing Institute (Senior Faculty), Griffith University Centre for Systems Innovation (Executive-in-Residence Capability Building), Commonland (Ecosystem Innovator Asia-Pacific Region) and United in Diversity (MIT IDEAS Asia-Pacific Faculty). She has worked as a lead social designer and systems practitioner across many issues and institutions in Australia.

She has also lectured as part of the MBA on Social Impact at UWA and UNSW focussed on innovation, systems-thinking and design. Some projects have included supporting the ATO with bringing in systems-led practices across their design branch, working with the Presencing Institute to embed systems practice in six UN Country Teams to find new ways to solve complex issues, as well working with local systems change projects such as the Alliance to End Homelessness WA. She is also a global fellow of the Academy for Systems Change.

THRIVING REGIONS PRACTICE FRAMEWORK

A MENTAL MODEL TO INNOVATE IN REGIONAL SYSTEMS



YOU

Your role as a systems actor. What is in regional leadership DNA and how it drives the way you intersect with other systems actors to unlock potential and deliver impact.



YOUR PLACE

The story that defines your region including the societal and economic indicators of wellbeing, along with norms and power balances that influence outcomes.



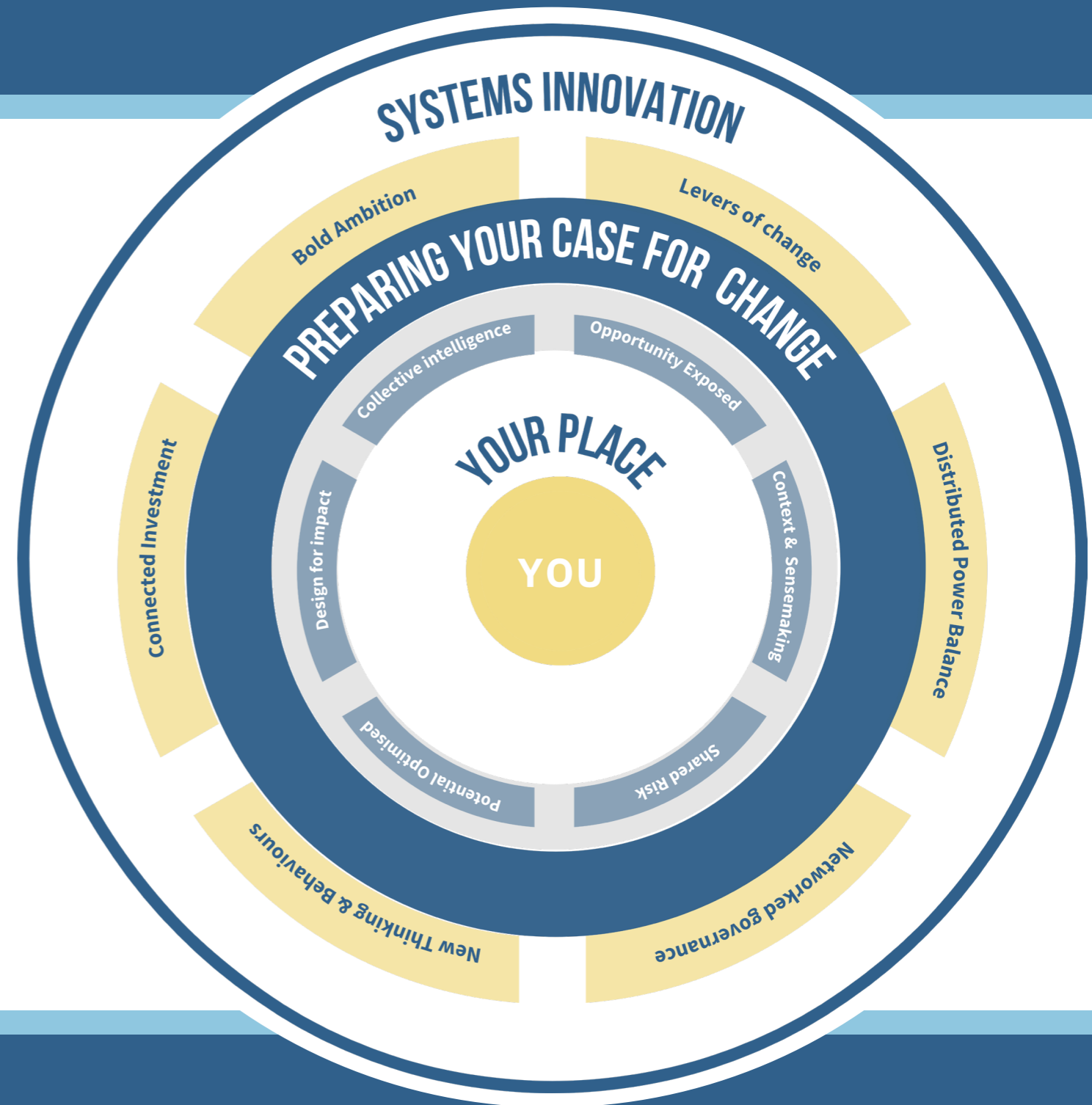
PREPARING YOUR CASE FOR CHANGE

Moving from reactive to generative approaches when operating in a system that targets a case for change to enable innovation in region-led development.



SYSTEMS INNOVATION

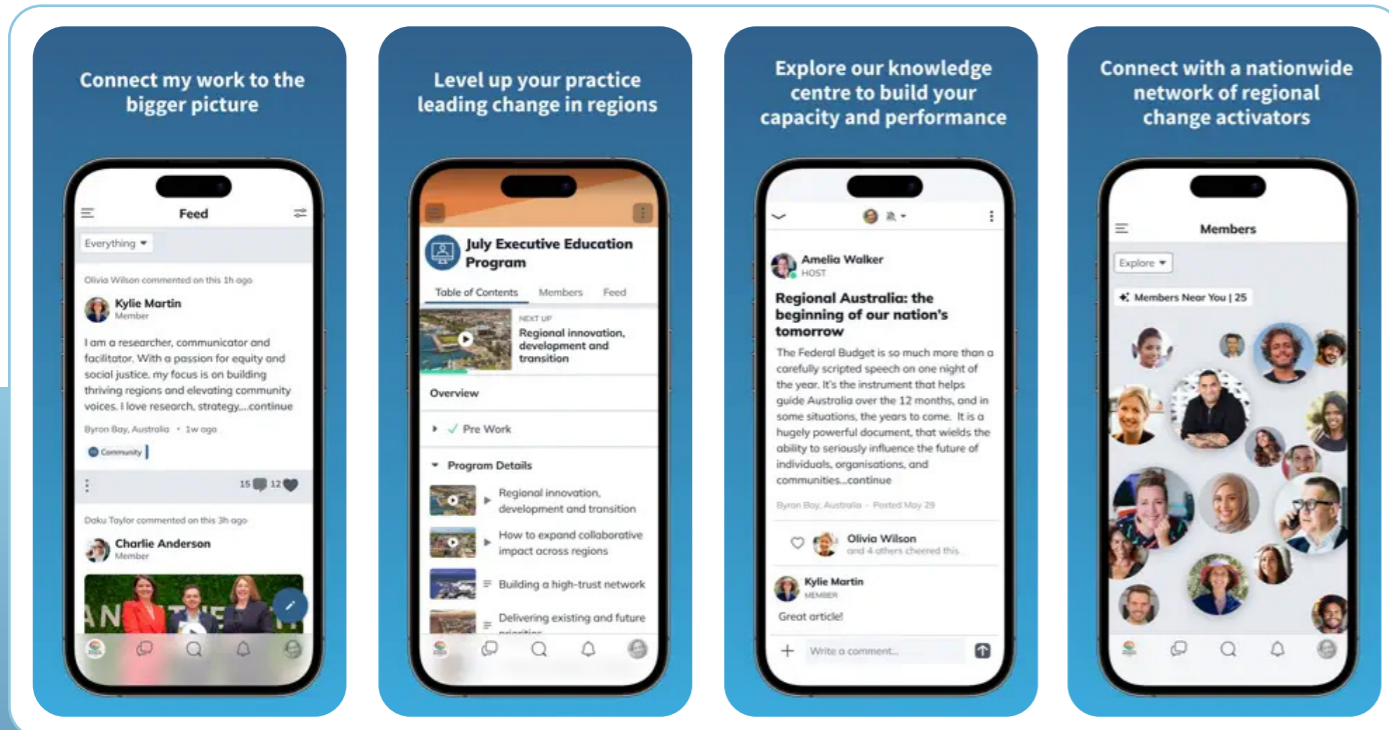
Understand regional systems to visualise, humanise and activate so that you significantly impact regional communities, industries, and economies.



REGIONAL AUSTRALIA HUB

WHAT IS THE REGIONAL AUSTRALIA HUB?

The Regional Australia Hub is designed to bring together a nationwide network of change activators to collaborate and innovate together, empowering Australian Regions to thrive.



HOW TO ACCESS THE REGIONAL AUSTRALIA HUB

Regional Australia Hub is a free app, available in the Apple store or Googleplay, that you can download to your phone or tablet to connect in with other regional leaders. It is also available on your desktop as a web browser.

As part of our Thriving Regions Community, you will have exclusive access to the resources, learning materials and community of practice designed specifically for regions. When you register for the program, you will receive an invitation to join the community, including a closed group for your program cohort.

WAYS TO USE THE REGIONAL AUSTRALIA HUB

- Complete your pre-work
- Connect with your buddy and the rest of the cohort
- Catch up on the presentations from our sessions
- Continue the conversation beyond the program - ask those burning questions
- Create focus groups based on topics of interest
- Hook into our extension discussions around building your case for change



ABOUT THE REGIONAL AUSTRALIA INSTITUTE

The Regional Australia Institute (RAI) is the nation's first and only independent think-tank dedicated to empowering Australia's regions. We are a not-for-profit organisation that undertakes research to inform, educate and activate our rural and regional communities.

RAI celebrates 13 years in 2024. We are proud of the vast array of research, data, and detailed insights the RAI has provided into many of the significant issues and challenges facing regional Australia. The work of the Institute is made possible through research partnerships with Australian and State governments, the national Regions Rising event series, regional consultancy projects, membership, and philanthropic funding.

In 2022, the RAI launched the Regionalisation Ambition 2032 - A Framework to Rebalance the Nation. The Ambition is a 10-year plan for regional Australia that seeks balanced growth across our nation's regional towns and cities. It outlines key targets, actions and benefits that will contribute to building prosperous regional communities, and a stronger Australia.

The RAI exists so that decision-makers at all levels of government, not-for-profits, industry, and community have the information they need to ensure the best outcomes for regional Australia. By replacing myths and stereotypes with facts and knowledge, the RAI seek to build a more inclusive, unified and prosperous future for all Australians.

We care about the regions, because when our regions are strong, Australia is strong.



DAY 1 - WELCOME EVENING: SUNDAY 20 OCTOBER 2024

Venue: The Boathouse, Grevillea Park, 7 Menindee Drive, Barton

TIMING	DETAILS	FACULTY
3:30 PM	Program open and discovery	Anna Stephenson Master of Ceremonies Director - Education and Regional Impact RAI
4:00 PM	Get to know your buddy Connect with your buddy in a walk, maybe sit and talk around Lake Burley Griffin.	
by 5:30 PM	Program registration Arrive back at The Boathouse to register. Then grab and drink and enjoy connecting with your peers and collaborators of the Program. There will be a range of drinks available including non-alcoholic options.	
5:45 PM	Welcome to Country Ground your program experience in Indigenous Systems, Knowledges and Wisdoms.	Aunty Caroline Hughes AM Executive Director - Collection Services AIATSIS
6:30 PM	Program welcome	Liz Ritchie Chief Executive Officer RAI
6:50 PM	Widening the circle- meet your peer group Over canapes and drinks, take the opportunity to meet your peer group and you will be asked to introduce your buddy to your group.	Sue Anderson Chief Program Facilitator
8:00 PM	Day 1 close	

*Reminder: part of Sunday's program will be outside so rug up as temperatures may still be chilly in the evening.
Please organise your own transport to the venue.*

DAY 2: MONDAY 21 OCTOBER 2024

Venue: Peninsula Room, National Museum of Australia, Lawson Crescent, Acton Peninsula, Canberra

TIMING	DETAILS	FACULTY
8:30 AM	Acknowledgement of Country / Day 2 introduction	Anna Stephenson Master of Ceremonies Director - Education and Regional Impact RAI
8:40 AM	What must change The RAI CEO, Liz Ritchie, will challenge us to consider what must change to enable our regions to thrive and lead Australia into the future.	Liz Ritchie Chief Executive Officer RAI
9:00 AM	Program grounding - Fireside <ul style="list-style-type: none"> Introduce the group to each other Set up expectations of the program and ways of working as a cohort Discuss how you can use the Regional Australia Hub throughout the Program and beyond Review the Program's core concepts and how they show up Build valuable relationships with your peers. 	Sue Anderson Chief Program Facilitator Libby Heard Education Program Manager RAI
10:00 AM	Morning tea	
10:30 AM	Transition to renewable regions <ul style="list-style-type: none"> The RAI's Transition to Net Zero research informs a future-focused interactive session on shaping and managing transition to net zero in your region Explore and shape a Transition to Net Zero Framework to visualise the desired impacts of transition to net zero on your region. 	Simon Pryor Director - Research and Policy RAI
12:00 PM	Lunch	
12:45 PM	Artificial Intelligence (AI) - Ready your region for the economy of today (and tomorrow) <ul style="list-style-type: none"> Understand how CSIRO's seven megatrends are shaping the future of regional Australia Deep dive into AI - Where is it at, where is it heading and what does it mean for how you operate now and into the future? Apply CSIRO AI Explorer tool to understand how you might apply AI in your organisation and your region to boost productivity and address workforce shortages Develop an AI user case for your organisation to identify, clarify and shape how and where your organisation might explore adoption of AI. 	Dr Stefan Hajkowicz Senior Principal Research Scientist CSIRO Data 61 Group work
2:30 PM	Afternoon tea	
3:00 PM	On the balcony - exploring practical systems innovation <ul style="list-style-type: none"> Explore how to design systems that work better because people are at the centre In this interactive enquiry session, delve into systems thinking to move beyond the bounds of your organisation to design practical systems innovations and change. 	Katie Stublely Social Design and Systems Innovation Griffith Centre for Systems Innovation Group work
4:30 PM	Observations and reflections	Marnie Baker Chief Observation Officer
4:45 PM	Day 2 wrap up	Sue Anderson Chief Program Facilitator
5:00 PM	Day 2 close	

DAY 3: TUESDAY 22 OCTOBER 2024

Venue: Peninsula Room, National Museum of Australia, Lawson Crescent, Acton Peninsula, Canberra

TIMING	DETAILS	FACULTY
8:30 AM	Acknowledgement of Country / Introduction to day 3	Anna Stephenson Master of Ceremonies Director - Education and Regional Impact RAI
8:50 AM	<p>Digging into 'cases for change' Breaking into groups, investigate each case, posing your burning questions to the systems activators involved in each of the 3 featured case studies.</p> <p>Be prepared to really dig into the details and dynamics, exploring what can be learnt from these systems innovations to inform your own case for change and your work in regions.</p> <ul style="list-style-type: none"> Case 1: RAPAD Power Grid Case 2: Wimmera Housing Innovations Case 3: Greater Shepparton Lighthouse Collective Impact Program <p>Each featured case study will be part of the program pre-work housed in the RAI's digital Regional Australia Hub.</p> <p>Each case investigation will run for 40 minutes after which you will switch to the next case with a shared reflection session to follow.</p>	<p>Cr. Rob Chandler Co-founder RAPAD Power Grid</p> <p>Morgan Gromold Deputy CEO RAPAD</p> <p>Chris Sounness CEO Wimmera Southern Mallee Development</p> <p>Amy Robinson CEO Greater Shepparton Lighthouse Project</p>
11:15 AM	Morning tea	
12:00 PM	Tapping into the data - Building future ready regions	Simon Pryor Director - Research and Policy RAI
1:00 PM	<p>Vision of the future - Visualise your 'big rock' Using visualisation tools, frame what 'big rock' you want to move through your individual case for change.</p>	<p>Sue Anderson Chief Program Facilitator</p> <p>Individual work</p>
1:45 PM	Lunch	
2:30 PM	<p>Future thinking and scenario planning This workshop will take a future-centered approach to long-term strategy- anchored in understanding the driving factors and context of possible future scenarios to offer you a forward view to avoid future shocks and to create disruptive innovations.</p>	<p>James McKee Chief Executive Officer RDA Tasmania</p> <p>Group work</p>
3:30 PM	<p>Who's in your circle of trust? Map your trusted advice circle.</p>	<p>Anna Stephenson Master of Ceremonies Director - Education and Regional Impact RAI</p> <p>Individual work</p>
4:00 PM	Observations and reflections	Marnie Baker Chief Observation Officer
4:30 PM	Break	
6:00 PM	<p>BBQ dinner Garden of Australian Dreams, National Museum of Australia</p>	
7:00 PM	<p>Dinner keynote - From the ground up: unlocking the economic potential of Australia's regions Marnie will share what she sees needs to happen to support regional population growth, address the regional housing crisis, and unlock the economic potential of Australia's regional communities.</p>	<p>Marnie Baker Former Managing Director Bendigo and Adelaide Bank</p>
8:30 PM	Program close	

DAY 4: WEDNESDAY 23 OCTOBER 2024

Venue: Peninsula Room, National Museum of Australia, Lawson Crescent, Acton Peninsula, Canberra

TIMING	DETAILS	FACULTY
8:30 AM	Acknowledgement of Country / Introduction to day 4	Anna Stephenson Master of Ceremonies Director - Education and Regional Impact RAI
8:45 AM	Fireside reflection of the program so far	
9:30 AM	<p>Shaping your case for change Develop your own case for change informed by insights gained throughout the Program.</p> <ul style="list-style-type: none"> What 'big rock' do you plan to tackle ? Who needs to be in your advisory group? Who in this room might help you and how can they help? What are your first and next steps? How might you hold yourself accountable for delivering your case for change? 	<p>Sue Anderson Chief Program Facilitator</p> <p>Individual / Group work</p>
10:30 AM	Morning tea	
10:50 AM	Complete your case for change	Individual / Group work
11:20 AM	Fireside commitment and completion of program	
12:20 PM	<p>Final reflections Our Chief Observation Officer shares her reflections and observations.</p>	Marnie Baker Chief Observation Officer
12:30 PM	Wrap up and program close	Anna Stephenson Master of Ceremonies Director - Education and Regional Impact RAI
12:45 PM	Lunch	
By 1:30 PM	Depart	



**REGIONAL
AUSTRALIA
INSTITUTE**

© Regional Australia Institute 2024

CONTACTS AND FURTHER INFORMATION

P. 02 62603733

E. INFO@REGIONALAUSTRALIA.ORG.AU

WWW.REGIONALAUSTRALIA.ORG.AU

WWW.REBALANCETHENATION.COM.AU



Australian Government

BUILDING AUSTRALIA



The Executive Education Program is partially funded by the Australian Government through the Department of Infrastructure, Transport, Regional Development, Communications and the Arts.